

# Appendix 4 – 2023/24 Q2

## CHILDREN’S SERVICES, EDUCATION AND LIFELONG SKILLS

**Cabinet Member:** Councillor Debbie Andre

**Portfolio Responsibilities:**

- Adoption
- Fostering
- Disabled Children Support
- Respite Care
- Early Help
- Care Leavers
- Safeguarding
- Short Breaks
- Youth Service
- Special Educational Needs
- Alternative Education
- Early Years Development
- School Improvement
- Schools
- Asset Management
- Home to School Transport
- Youth Council and Youth MP

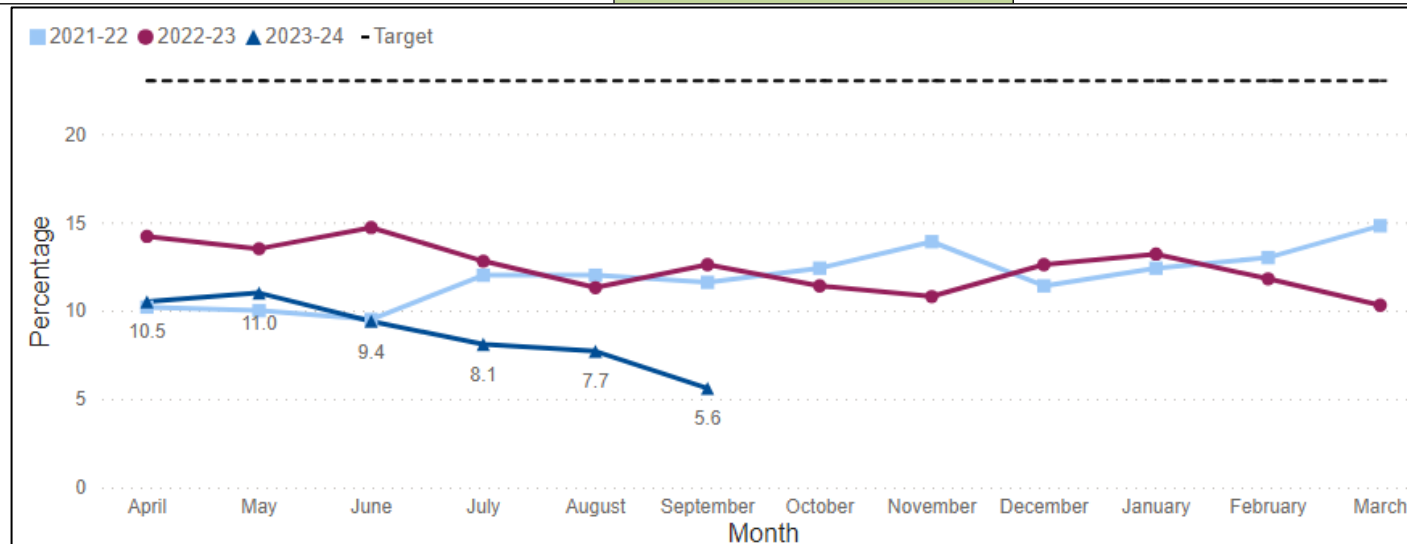
### Performance Measures

**Percentage of children becoming the subject of Child Protection Plan for a second or subsequent time (within two years of the previous plans end date)**

**Aim:** The percentage of children becoming subject of a second or subsequent plan remains below 23 percent.

**UN Sustainable Development Goal:** 3

<b>Most Recent Status:</b> September 2023	<b>GREEN</b>
<b>Previous Status:</b> June 2023	<b>GREEN</b>



- The management team reviews each case of a child who is subject to a second or subsequent child protection plan within two years to ensure that the response from the social care teams and Independent Reviewing Service is proportionate, and to provide assurance that there were no missed opportunities for earlier intervention or support.
- The reason for the second or subsequent child protection plan is analysed; the majority being because of associated issues with the first child protection plan such as domestic abuse, adult substance misuse and/or adult mental health.

**Percentage of children with a referral within 12 months of a previous referral**

**Aim:** The percentage of children with a referral within 12 months is below 30 percent target

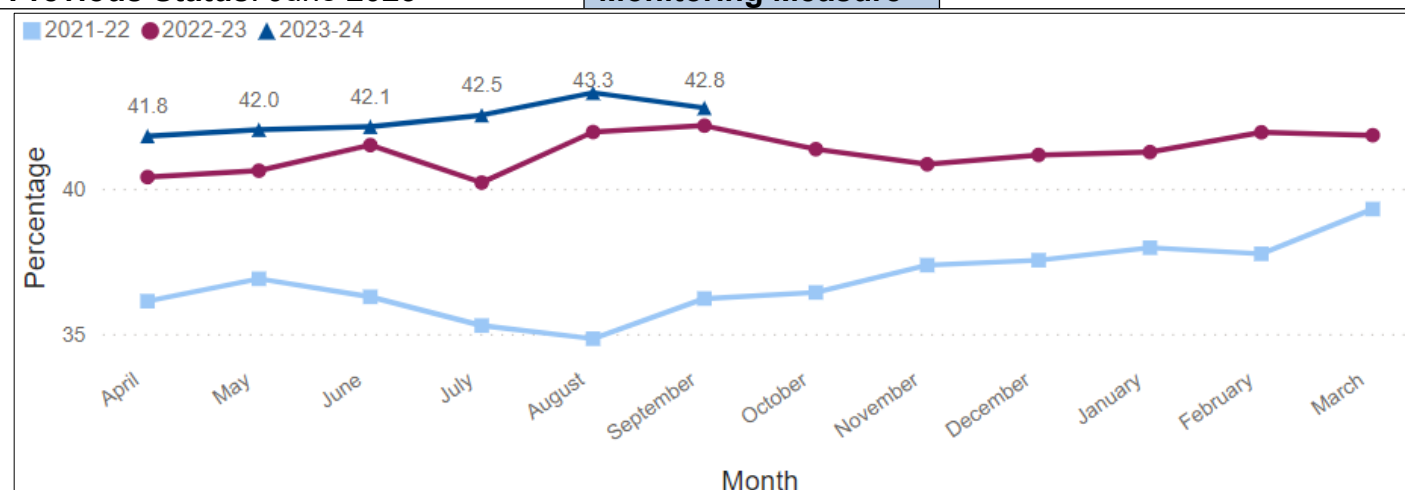
**UN Sustainable Development Goal: 3**

**Most Recent Status:** September 2023

**Monitoring Measure**

**Previous Status:** June 2023

**Monitoring Measure**



- The Multi-Agency Safeguarding Hub (MASH) counts all re-referrals to ensure a more accurate view rather than only counting those re-referrals that originally progressed to an authorised completed assessment.

**Percentage of early help cases closed with outcomes achieved**

**Aim:** The percentage of children with a referral within 12 months is below 30 percent target

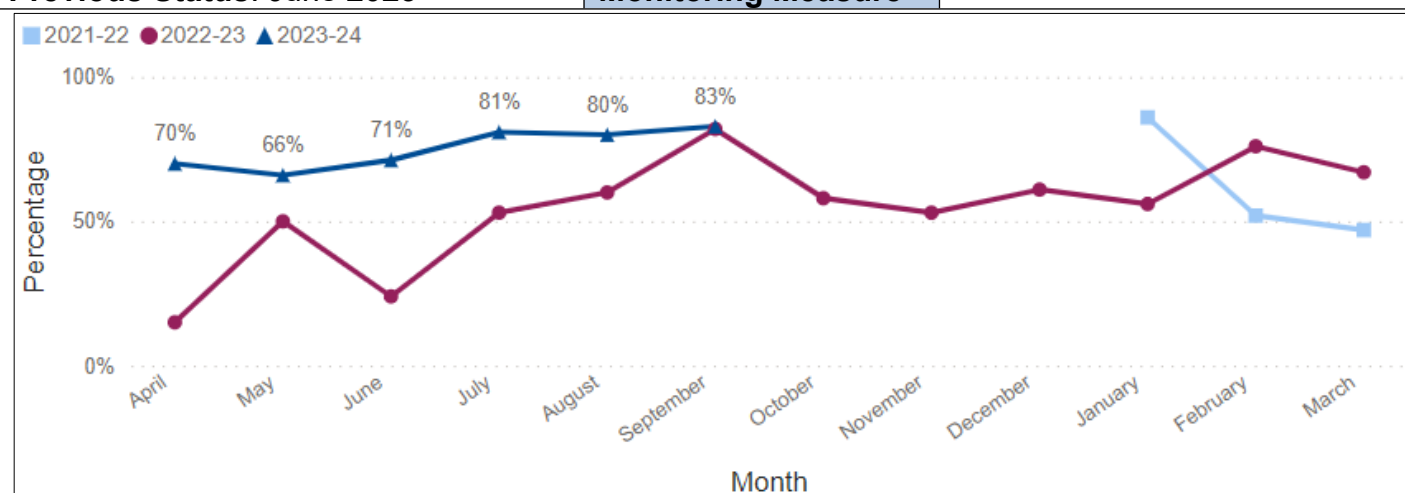
**UN Sustainable Development Goal: 3**

**Most Recent Status:** September 2023

**Monitoring Measure**

**Previous Status:** June 2023

**Monitoring Measure**



- There are assorted reasons for closure of Early Help cases, of which outcomes is one.

**Percentage of primary and secondary schools graded as good or outstanding in the most recent inspection (not including schools with no inspection score)**

**Aim:** Increase in the number of schools graded good or outstanding in the most recent inspection.

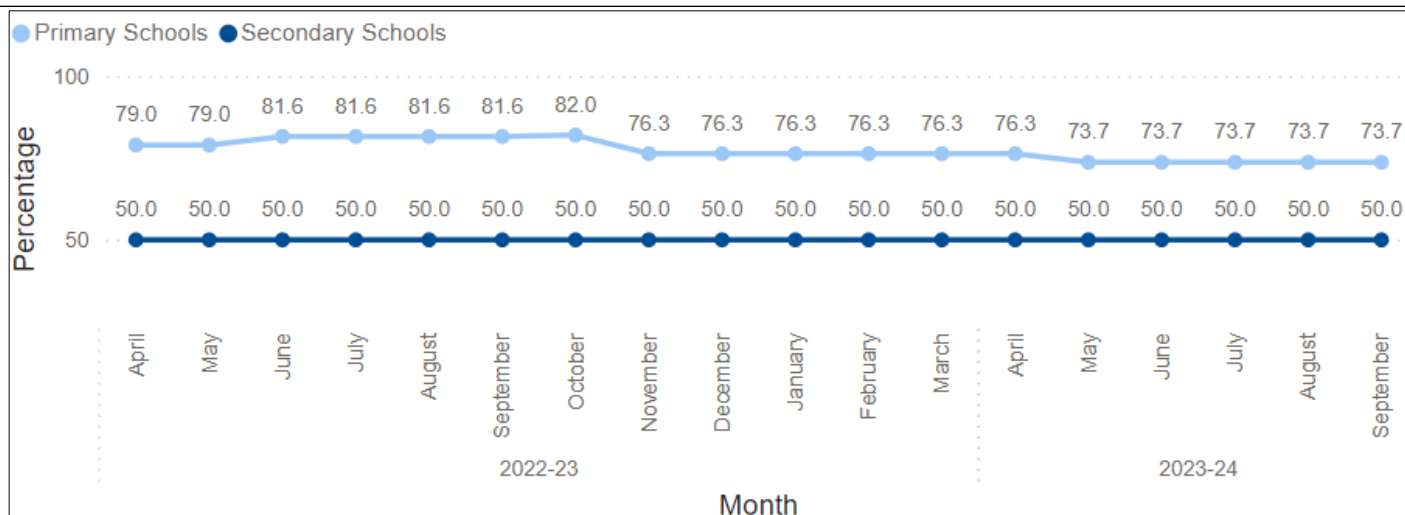
**UN Sustainable Development Goal: 3**

**Most Recent Status:** September 2023

**Monitoring Measure**

**Previous Status:** June 2023

**Monitoring Measure**



- Ofsted inspections carried out in the period were:
  - Free School (20 July 2023) - No change to score
  - Holy Cross Catholic Primary School (12 July 2023) – No change to score

**Percentage of all Isle of Wight LA schools graded good or outstanding in most recent inspection**

**Aim:** Increase in the percentage of schools graded good or outstanding in the most recent inspection.

**UN Sustainable Development Goal:** 3

<b>Most Recent Status:</b> September 2023	<b>Monitoring Measure</b>
<b>Previous Status:</b> June 2023	<b>Monitoring Measure</b>

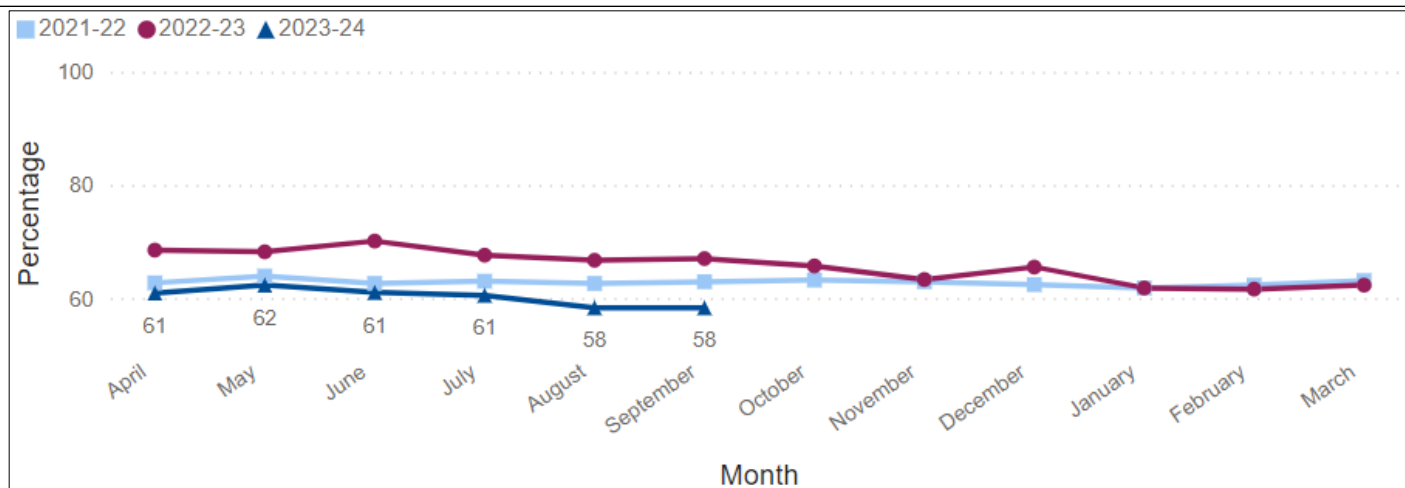
Schools	Inadequate	Requires Improvement	Good	Outstanding	Ungraded
48	0	13	35	0	0
	0.00%	27.08%	72.92%	0.00%	0.00%
	27.08%		72.92%		0.00%

**Percentage of care leavers in education, employment, or training (all care leavers aged over 16)**

**Aim:** Increase in the percentage of care leavers in education, employment, or training

**UN Sustainable Development Goal:** 3

<b>Most Recent Status:</b> September 2023	<b>Monitoring Measure</b>
<b>Previous Status:</b> June 2023	<b>Monitoring Measure</b>



- The team continue to support young people to access University, providing role models to other young people.

**Percentage of Post 16 Not in Education, Employment or Training**

**Aim:** Decrease in the percentage of post 16 not in education, employment, or training

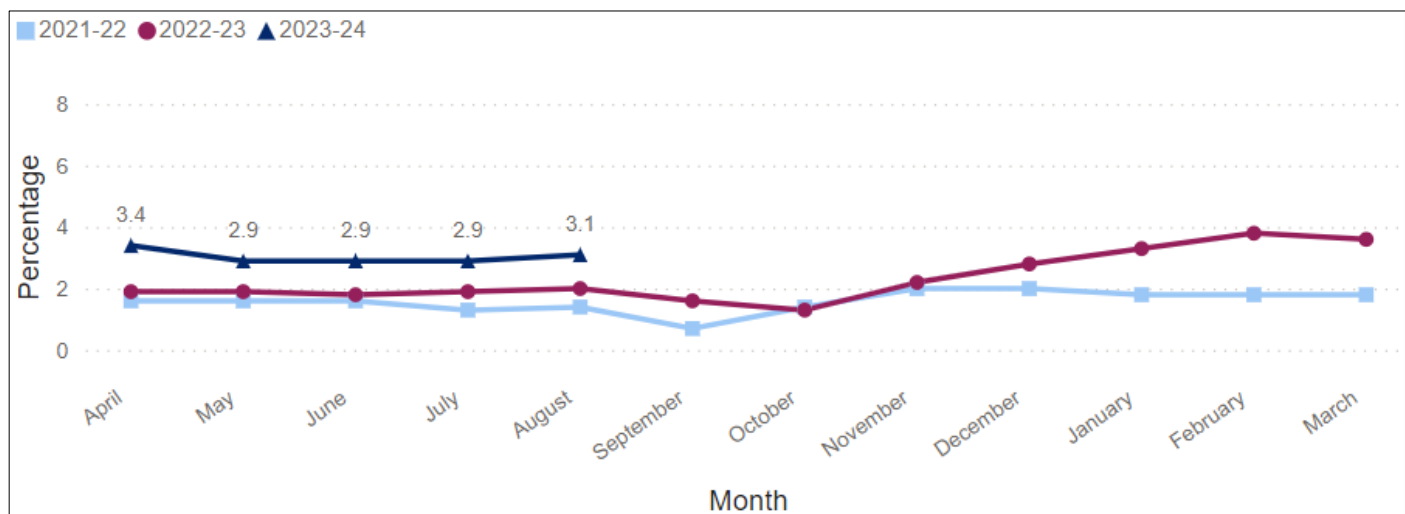
**UN Sustainable Development Goal:** 3

**Most Recent Status:** August 2023

**Monitoring Measure**

**Previous Status:** June 2023

**Monitoring Measure**



- The Department for Education uses a combined measure of young people 16-18 who are either Not in Employment, Education or Training (NEET) or Unknown.
- Department for Education NEET data for September 2023 is not available until later this month, therefore the Q2 narrative relates to August 2023.
- There has been a rise in the proportion of young people recorded as NEET compared to the same period the previous year, from 2.0 to 3.1 percent. This is consistent with national increases and is attributed to a decline in young people’s academic resilience and increase in mental health challenges, post-pandemic.
- Intensive 1:1 support is provided by the council’s Island Futures service to enable young people to engage in positive post 16 destinations, and by projects such as ‘Skills for Work’ part of the council’s UK Shared Prosperity Fund programme.

## Service Updates - Key Aspirations and Ongoing Business

### The following activity supports UN Sustainable Development Goal 3:

Work is ongoing on the Transforming Special Educational Needs and Disabilities (TSEND) programme which will draw together the relevant stakeholders, including parents, into the SEND self-evaluation and action plan and continue with the transforming SEND work.

In August, Ofsted, and the Care Quality Commission (CQC) undertook a thematic review (not an inspection) of a small number of Local Authorities who have received funding under the Family Hub and Trailblazer programme. The purpose of the review was to support local authorities in their work on the programme and to form recommendations for government to inform a future joint inspection of Family Hubs. The inspectors were on site for two days and met with colleagues from the local authority team and a wide range of health and community commissioners and providers, as well as visiting the hubs themselves and meeting with families and practitioners. The feedback from the visits showed that:

- The partnership is strong and effective.
- Statutory agencies are well supported by well-trained volunteers.
- Services are accessible to families who are aware of the offer available to them and well support by staff.
- Joined up practice between agencies was evident, for example, having early contact visits for new and expectant parents in the hub took away any stigma and helped families take part in other activities.

The visit highlighted some areas for our ongoing development, including how we better evidence the impact of the work over the next 12-18 months, closer integration of Maternity Services and ensuring the new Parent Carer Panel advocate for families moving forward.

The Quality Improvement Plan (QUIP) was updated in July and shows continued improvement with all aspects amber or green. The quality assurance programme ensures that audits are undertaken and checks their quality.

Children continue to be reunified to families when it is safe to do so, and two care orders were discharged in July.

The review of the Social Care System has been undertaken and a summary report with costed options is being prepared.

Modernising Placement Programme (MPP) work continues to progress with a business case being worked up and some work being replicated from Hampshire.

Work to progress linking with Adopt South continues with matching meetings going ahead prior to linking at Adoption Panel. All island children continue to be matched and plans are progressing appropriately.

### The following activity supports UN Sustainable Development Goal 4:

The public notice for the closure of Chillerton & Rookley school is to be published shortly. This will run for six weeks and go back to cabinet in November for a final decision. The proposed closure date is 31 December.

At the Policy and Scrutiny Committee for Children's Services, Education and Skills (1 September 2023), representatives from headteachers and school governors made a submission that

highlighted the issues of school place planning, its impact on education of children and over-sufficiency of primary school places. It was resolved that the Cabinet Member for Children’s Services, Education and Skills be requested to submit a report on school place planning, together with the statements from Isle of Wight primary headteachers and primary Chairs of Governors, to Cabinet for consideration and identification of options regarding the future provision of primary education on the Island. A report was due to go to Corporate Scrutiny Committee and Cabinet in June 2023 but was withdrawn ahead of the meetings. A verbal update was given by the new Cabinet Member for Children’s Services, Education and Skills, at which it was stated that further consultations would be needed.

Although the end of year activities, such as assessments and public exams that lead to the key performance indicators have not yet had provisional data sets released, it is clear from looking at local data that at primary level there has been a bounce back compared to 2022 figures, with improvements in areas. For key stages 4 and post-16, the results indicated that the provisional data set will show stability and/or improvements. There is still lots to do and September started with a focus on school improvement throughout the system.

The Youth Council continued to meet regularly. Membership has increased through active recruitment drives in secondary schools and through partnership arrangements developed with the Youth Trust Young People’s Forum, Sandown Youth Forum, and the National Health Service (NHS) Young People’s Representative Board. Every report to Committee, Cabinet and Council is considered for the impact on young people and future generations. The Youth Council has also elected two additional portfolio holders which include representatives for lesbian, gay, bi-sexual, transgender, queer (or questioning) and others (LGBTQ+) young people and young people from equality and diverse local communities. The Youth Council supported the Isle of Wight Pride again, gaining positive local publicity. An existing member of staff who is a child practitioner in our Children in Care team provides dedicated support to the Youth Council and Youth Member of Parliament (MP). The Youth MP has been supported to participate in the National Youth Council Assembly in London and the National Youth Conference in Leeds to ensure the voice, concerns and contributions of Isle of Wight children and young people are represented nationally. Plans for the next quarter include participating in the recruitment process to appoint the new Director of Children’s Services.

## Strategic Risks

<b>Failure to improve educational attainment.</b>		
<b>Assigned to: Director of Children’s Services</b>		
<b>Inherent score</b>	<b>Target score</b>	<b>Current score (October 23)</b>
<b>16 VERY HIGH</b>	<b>6 LOW</b>	<b>10 MEDIUM</b>
<b>Previous scores</b>		
<b>August 23</b>	<b>June 23</b>	<b>March 23</b>
<b>10 MEDIUM</b>	<b>10 MEDIUM</b>	<b>10 MEDIUM</b>
<b>Risk score is consistent</b>		

<b>Failure to identify and effectively manage situations where vulnerable children are subject to abuse.</b>
<b>Assigned to: Director of Children’s Services</b>

Inherent score	Target score	Current score (October 23)
16 VERY HIGH	5 LOW	9 MEDIUM
Previous scores		
August 23	June 23	March 23
9 MEDIUM	9 MEDIUM	9 MEDIUM
Risk score is consistent		

The ending of the partnership between IWC and HCC for Children’s Social Care and associated de-coupling arrangements. Assigned to: Director of Children’s Services		
Inherent score	Target score	Current score (October 23)
16 VERY HIGH	5 LOW	9 MEDIUM
Previous scores		
August 23	June 23	March 23
9 MEDIUM	N/A	N/A
New risk		